

**Paper Reference(s)    1BI0/2F**  
**Pearson Edexcel Level 1/Level 2 GCSE**  
**(9–1)**

**Biology**  
**PAPER 2**  
**Foundation Tier**

**Diagram Booklet**

**In the boxes below, write your name, centre number and candidate number.**

<b>Surname</b>					
<b>Other names</b>					
<b>Centre Number</b>					
<b>Candidate Number</b>					

## **INSTRUCTIONS**

**There may be spare copies of some diagrams in case you need them.**

**THIS DIAGRAM BOOKLET MUST BE  
RETURNED WITH THE QUESTION PAPER  
AT THE END OF THE EXAMINATION.**

# **Contents**

## **Page**

<b>5</b>	<b>Question 1(a)</b>
<b>6</b>	<b>Question 2(a)(i)</b>
<b>7</b>	<b>Question 2(a)(i) (Spare copy)</b>
<b>8</b>	<b>Question 2(a)(ii)</b>
<b>9</b>	<b>Question 3(a)</b>
<b>10</b>	<b>Question 3(b)</b>
<b>11</b>	<b>Question 4(a)</b>
<b>12</b>	<b>Question 4(b)</b>
<b>13</b>	<b>Question 4(c)</b>
<b>14</b>	<b>Question 5(a)</b>
<b>15</b>	<b>Question 6(a)</b>
<b>16</b>	<b>Question 6(a)(ii)</b>
<b>17</b>	<b>Question 7(a)</b>
<b>18</b>	<b>Question 7(b)(ii)</b>
<b>19</b>	<b>Question 8(a)</b>
<b>20</b>	<b>Question 8(b)</b>

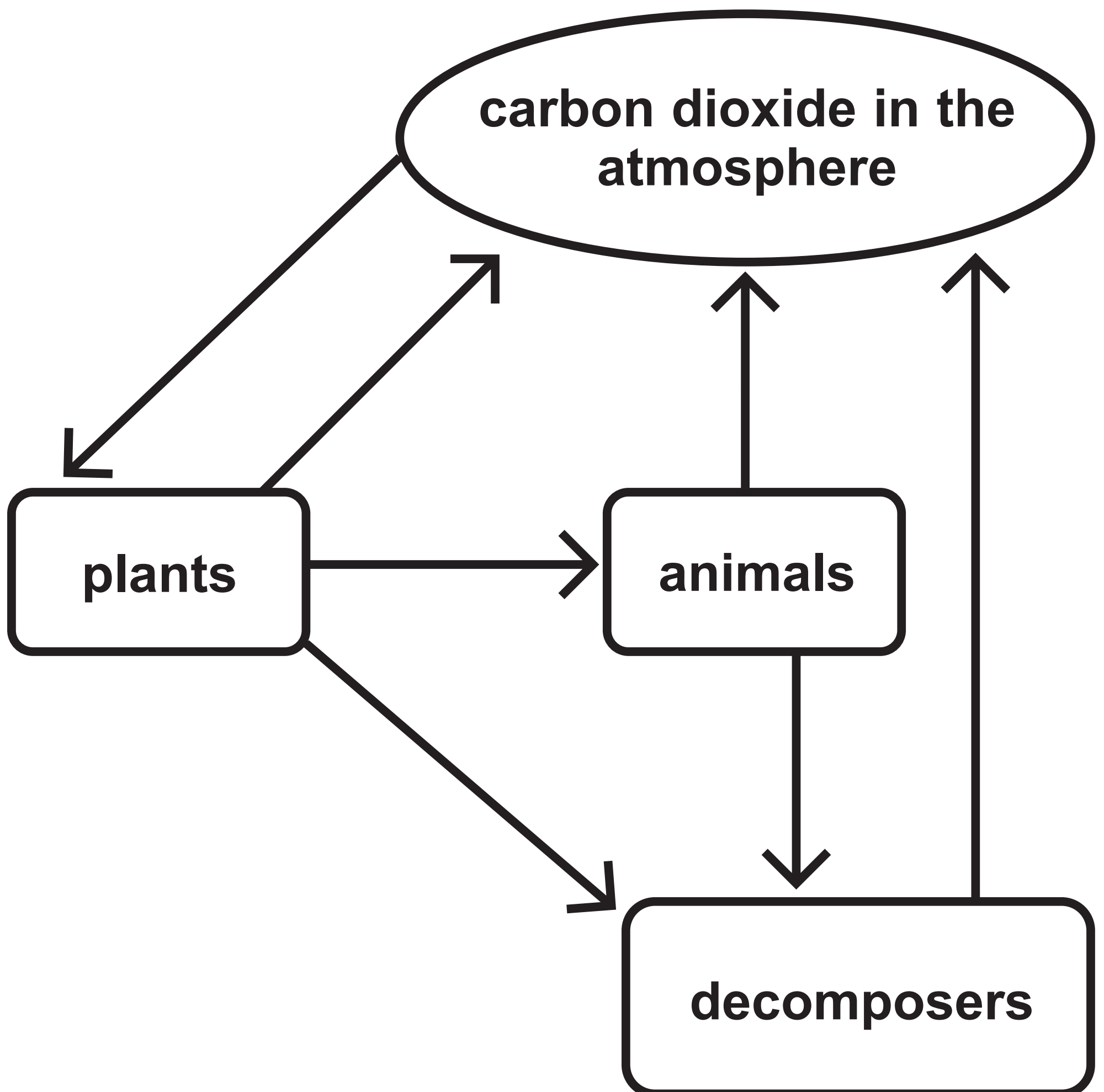
**(continued on the next page)**

**Contents continued.**

- 21 Question 8(c)**
- 22 Question 9(a)**
- 23 Question 9(c)**
- 24 Question 10(a)**
- 25 Question 10(b)**
- 26 Question 10(c)(ii)**

## Question 1(a)

FIGURE 1



Question 2(a)(i)

part of the blood

plasma

red blood cell

function

• produces oestrogen

• transports dissolved urea

• contains haemoglobin

• produces antibodies

• surrounds and digests foreign cells

Question 2(a)(i)

part of the blood

plasma

red blood cell

function

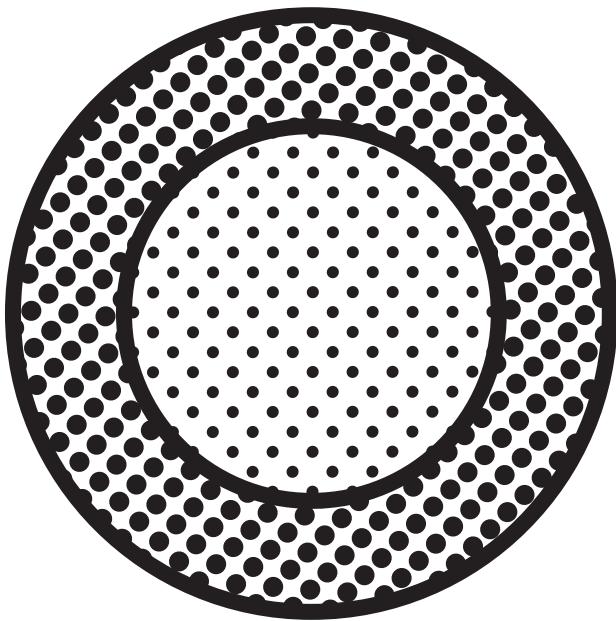
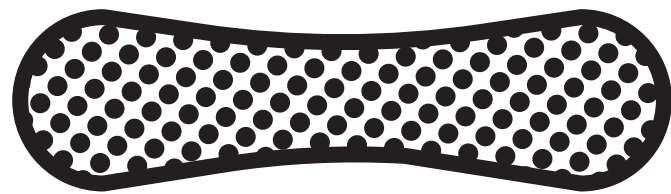
• produces oestrogen

• transports dissolved urea

• contains haemoglobin

• produces antibodies

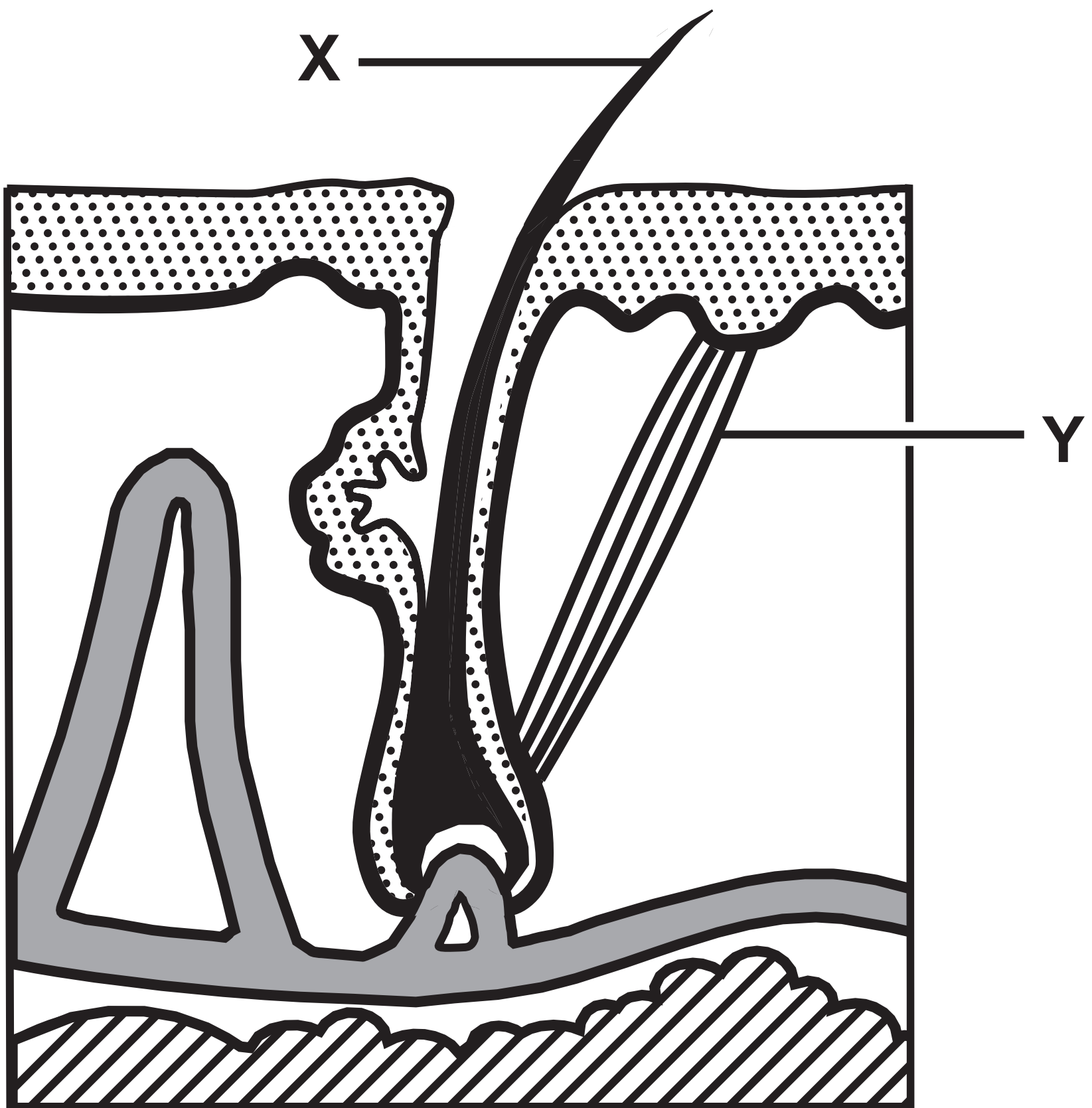
• surrounds and digests foreign cells

**Question 2(a)(ii)****FIGURE 2****plan view****side view**



## Question 3(a)

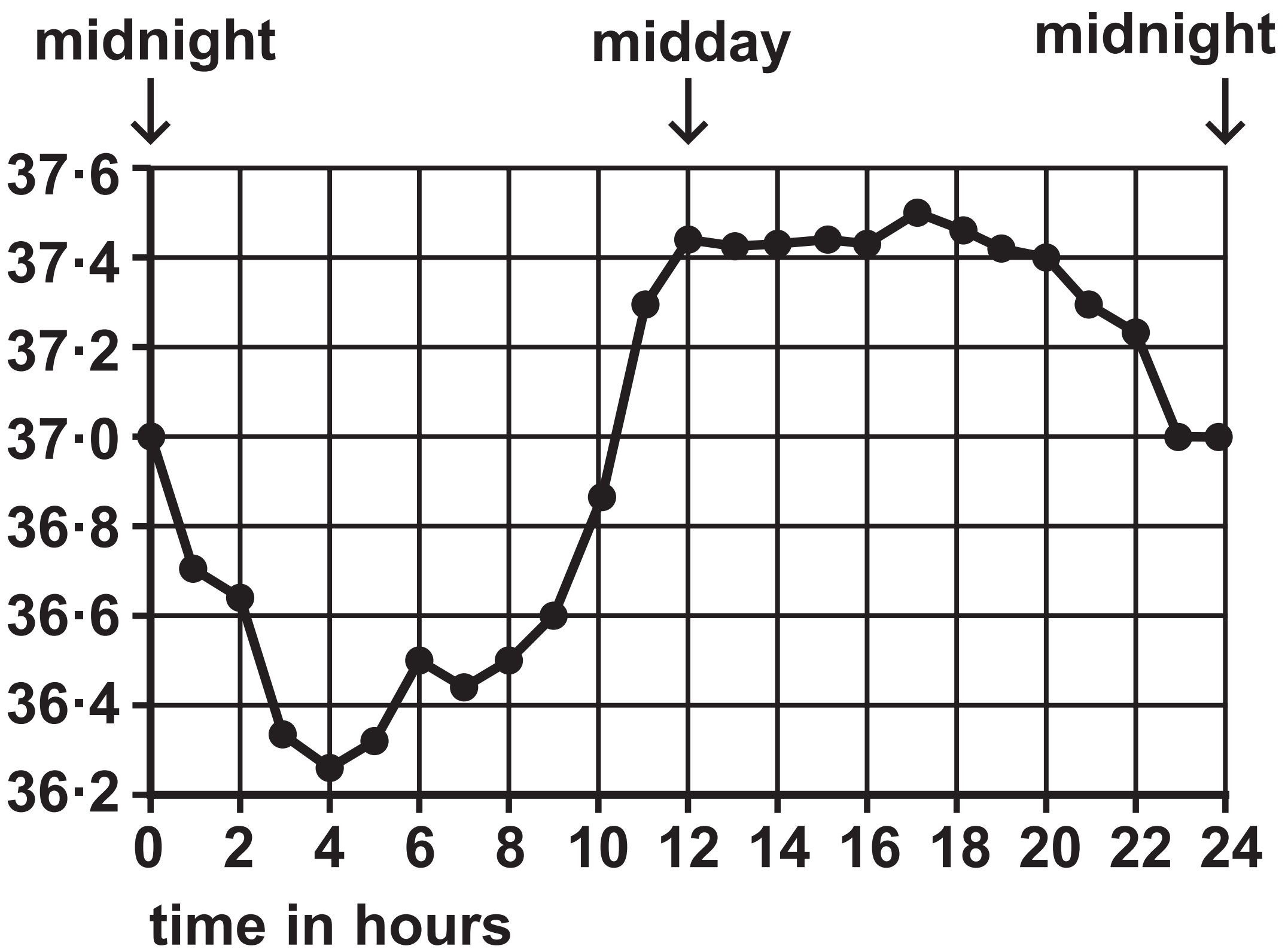
FIGURE 3



## Question 3(b)

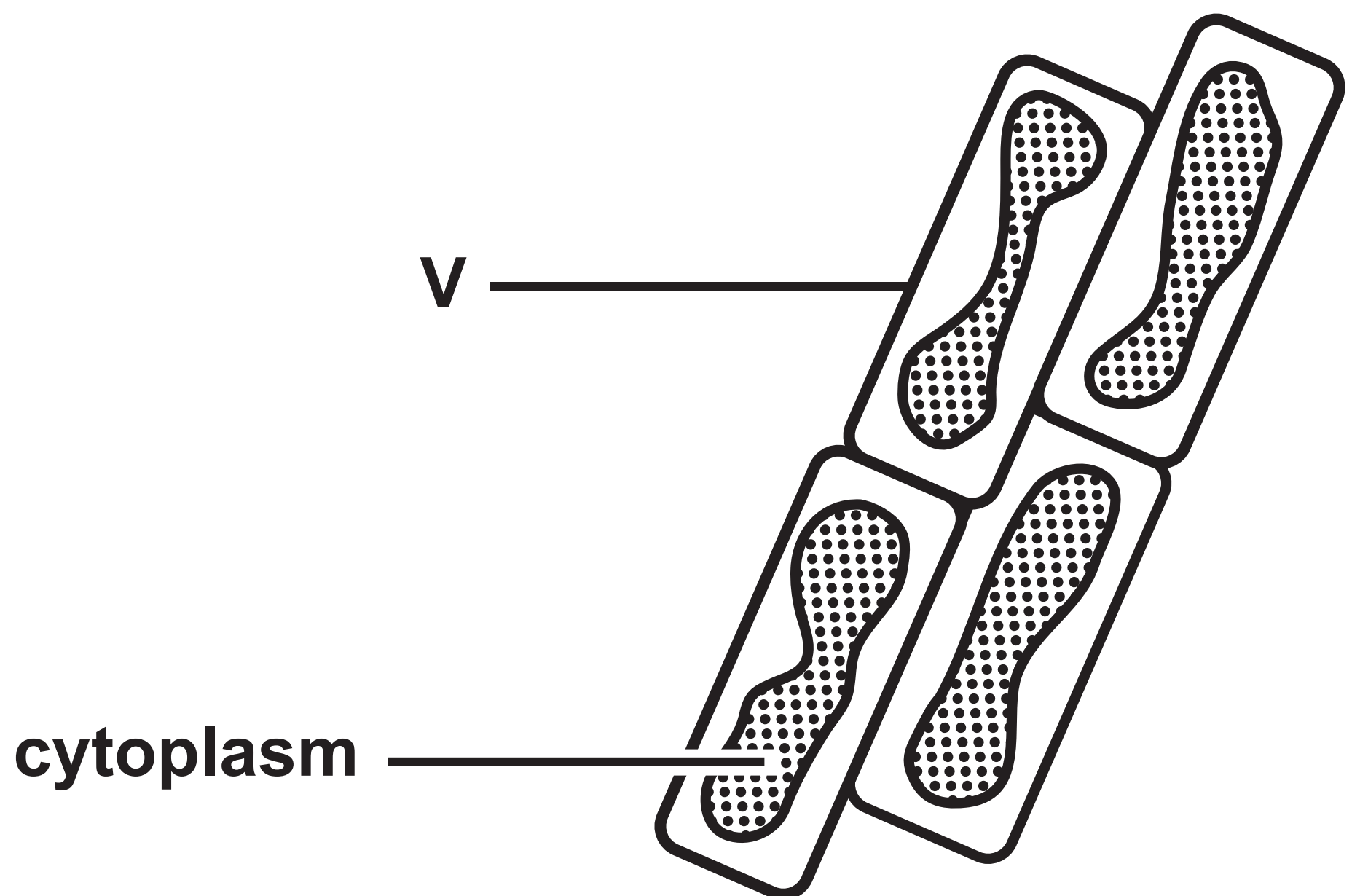
FIGURE 4

body temperature  
in  $^{\circ}\text{C}$



## Question 4(a)

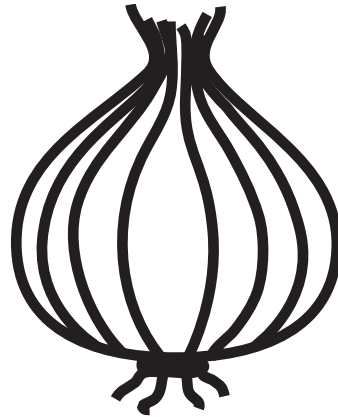
FIGURE 5



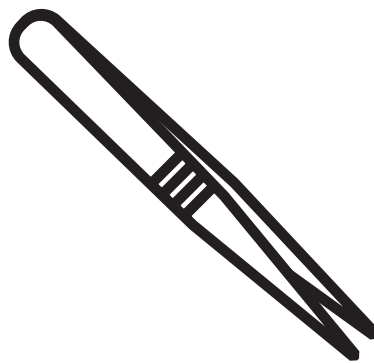
Question 4(b)

**FIGURE 6**

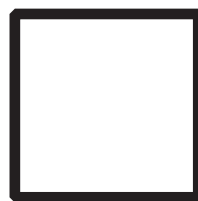
**onion**



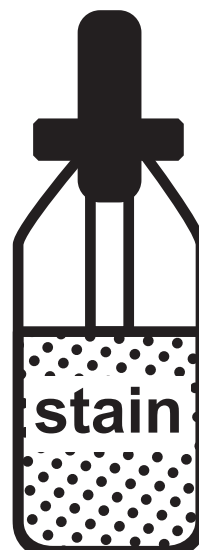
**tweezers**



**cover slip**



**bottle of stain**

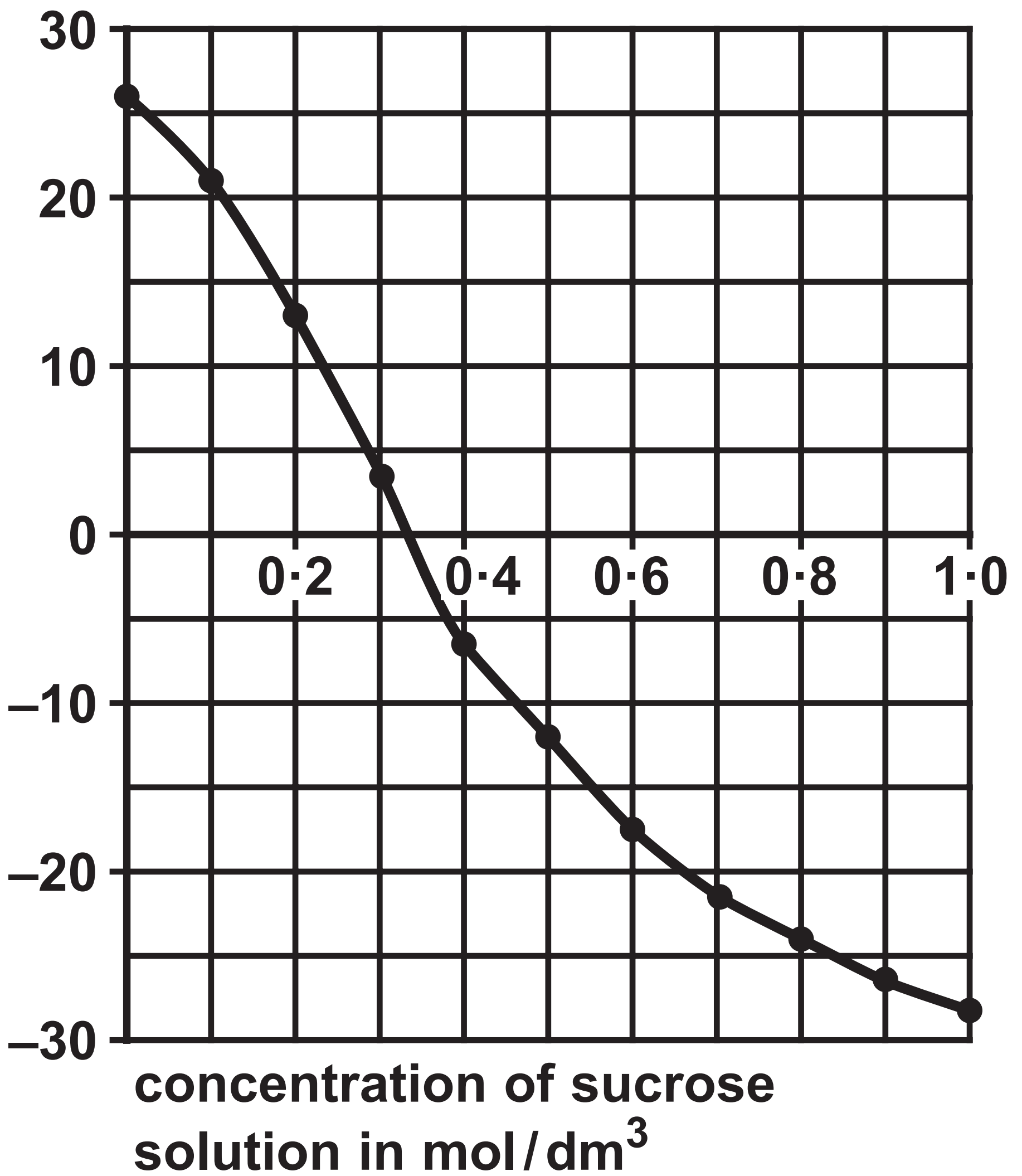


**microscope slide**



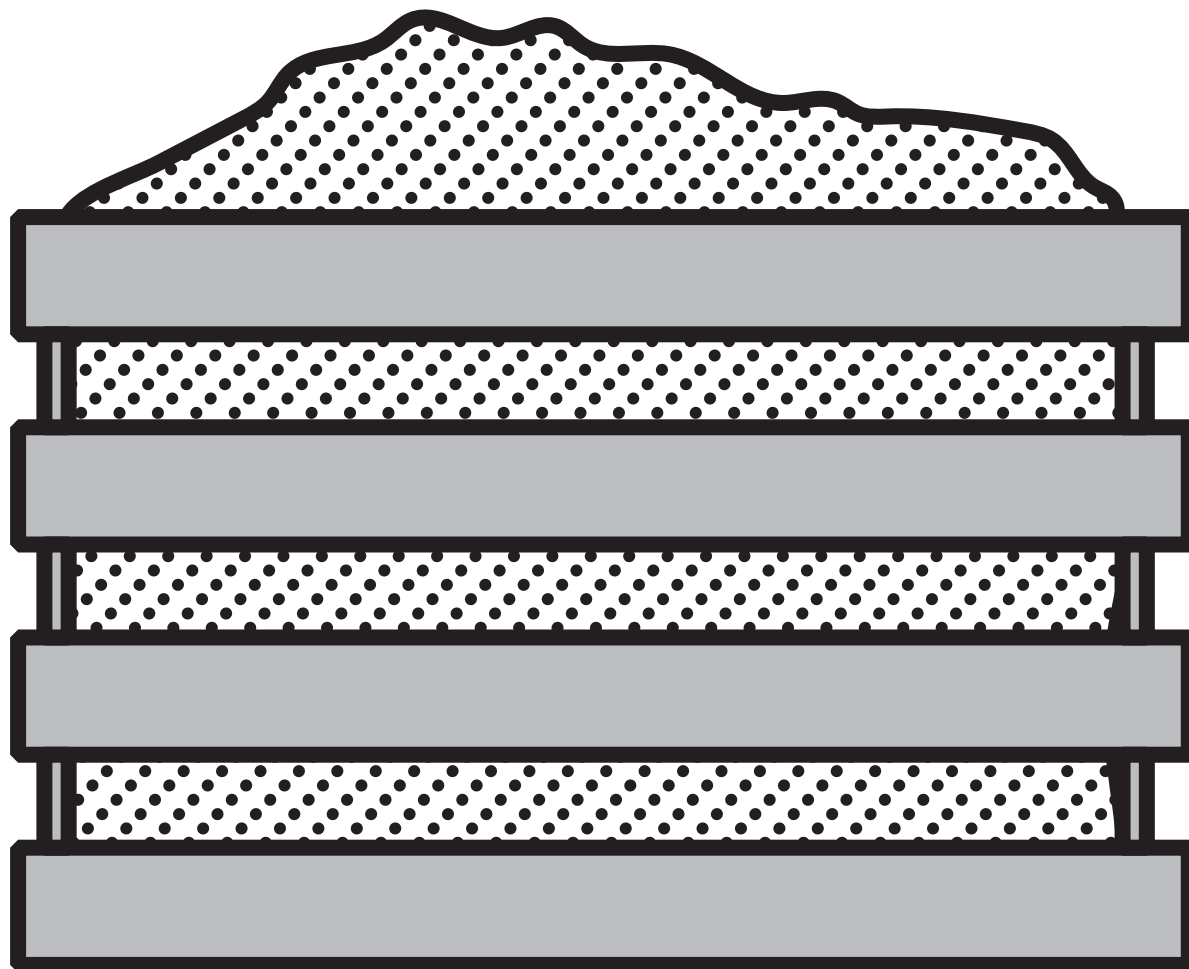
Question 4(c)  
FIGURE 7

percentage  
change in mass



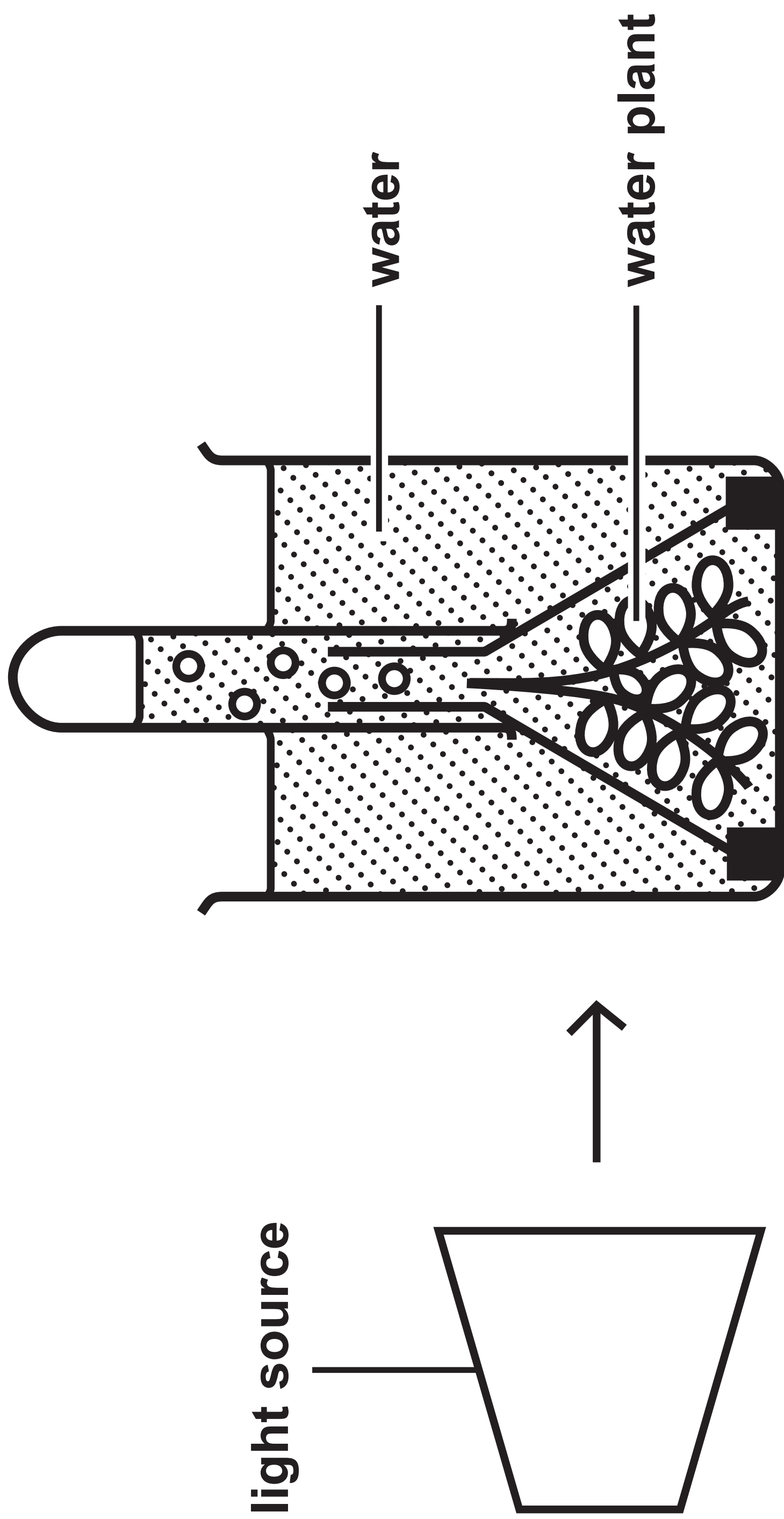
## Question 5(a)

FIGURE 8



Question 6(a)

FIGURE 10



## Question 6(a)(ii)

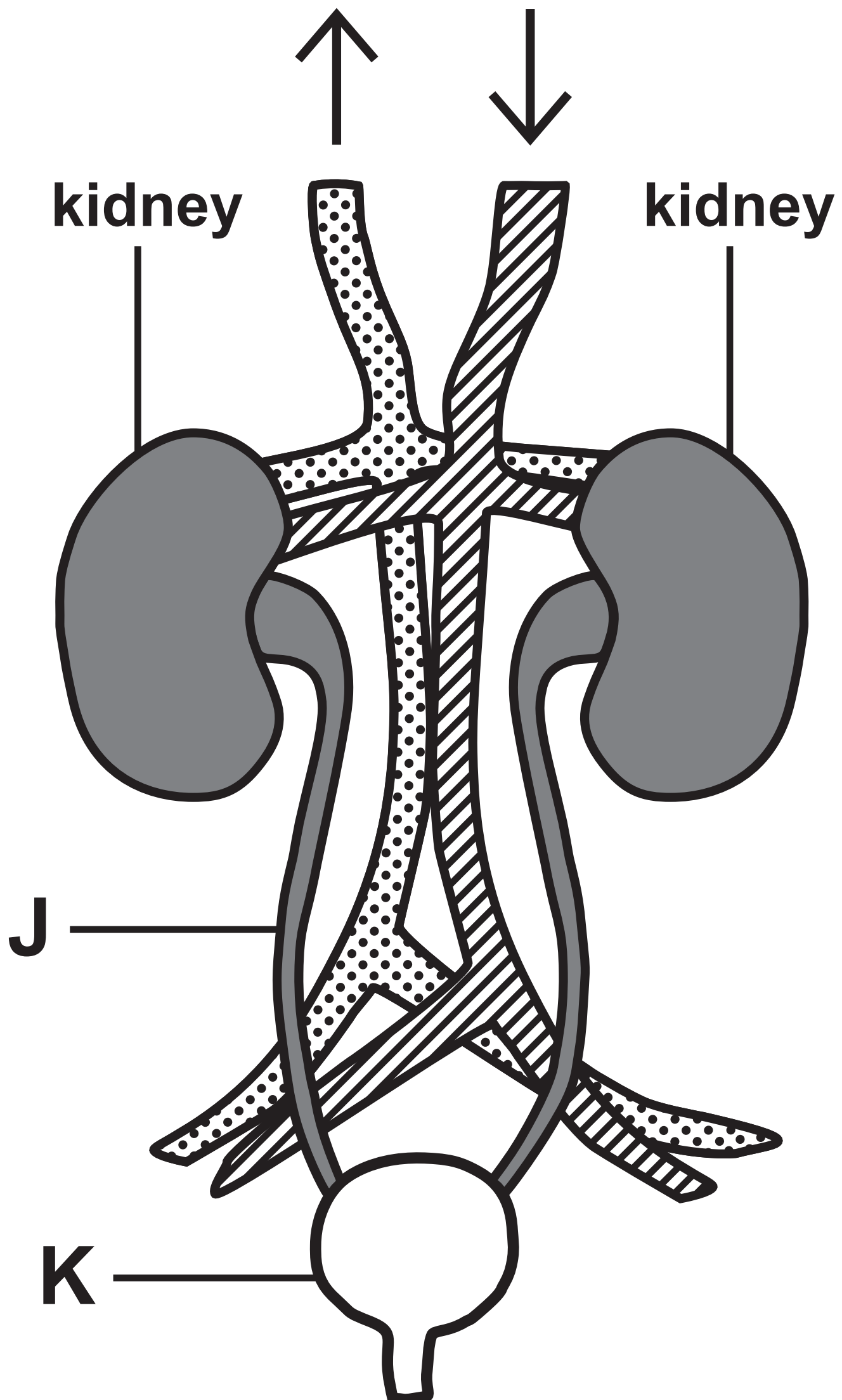
FIGURE 11

<b>light intensity in arbitrary units</b>	<b>rate of photosynthesis in bubbles per minute</b>
<b>25</b>	<b>19</b>
<b>31</b>	<b>43</b>
<b>39</b>	<b>46</b>
<b>50</b>	<b>95</b>
<b>69</b>	<b>125</b>
<b>100</b>	<b>222</b>



## Question 7(a)

FIGURE 12



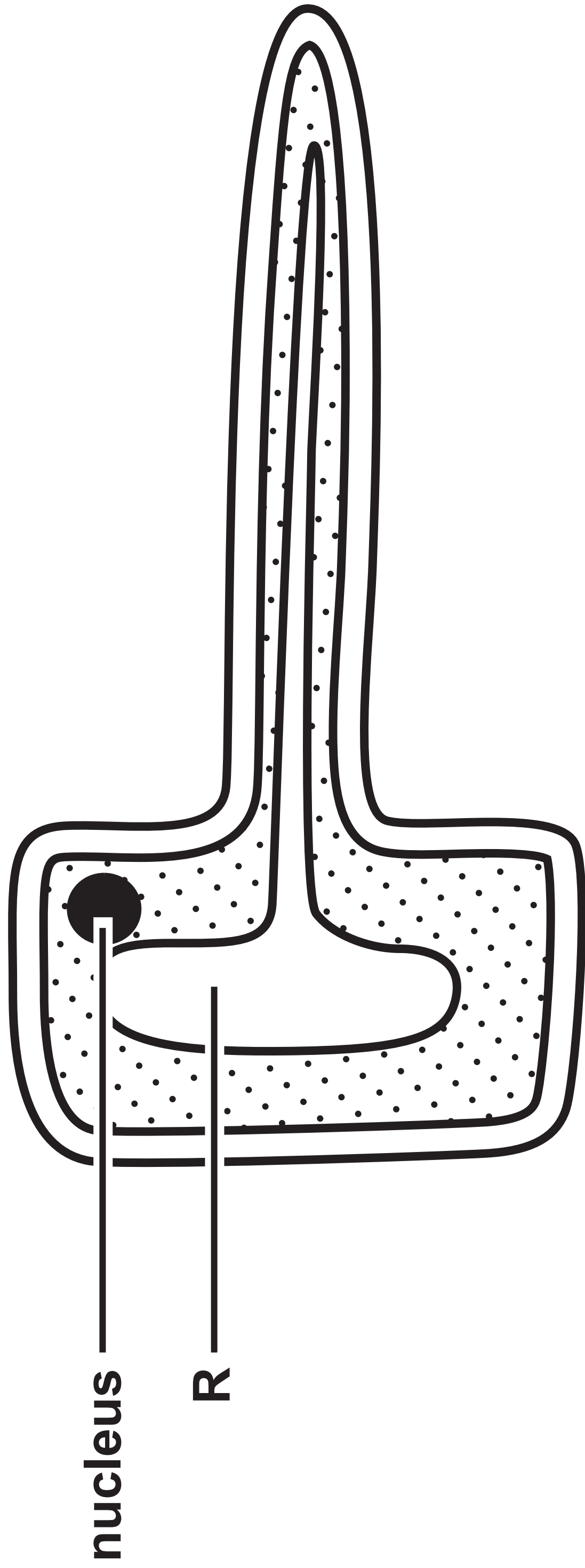
## Question 7(b)(ii)

FIGURE 13

<b>blood component</b>	<b>is the component filtered into the nephron?</b>
<b>blood cells</b>	<b>no</b>
<b>large proteins</b>	<b>no</b>
<b>glucose</b>	<b>yes</b>
<b>sodium ions</b>	<b>yes</b>

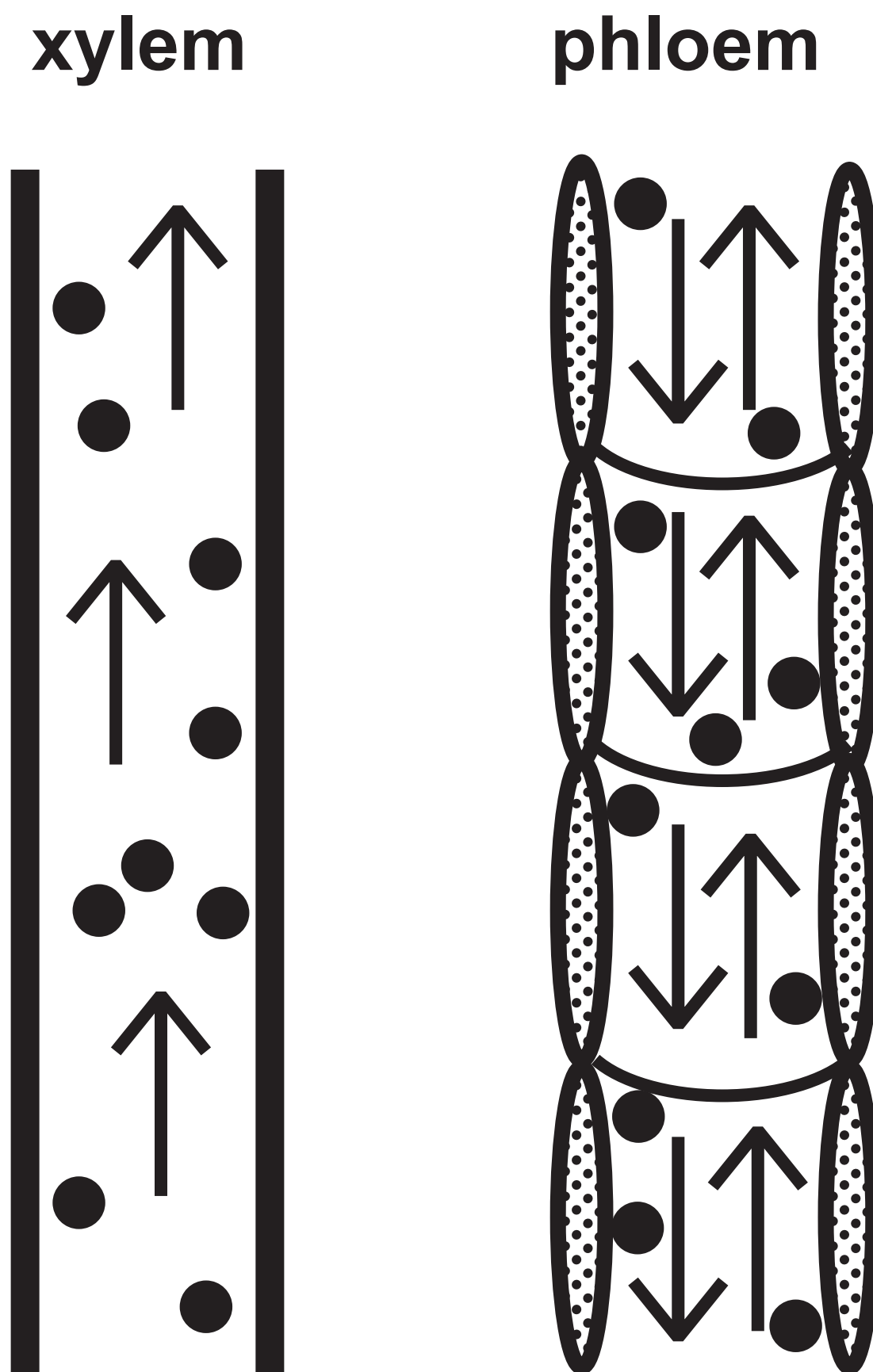
Question 8(a)

FIGURE 14



## Question 8(b)

FIGURE 15



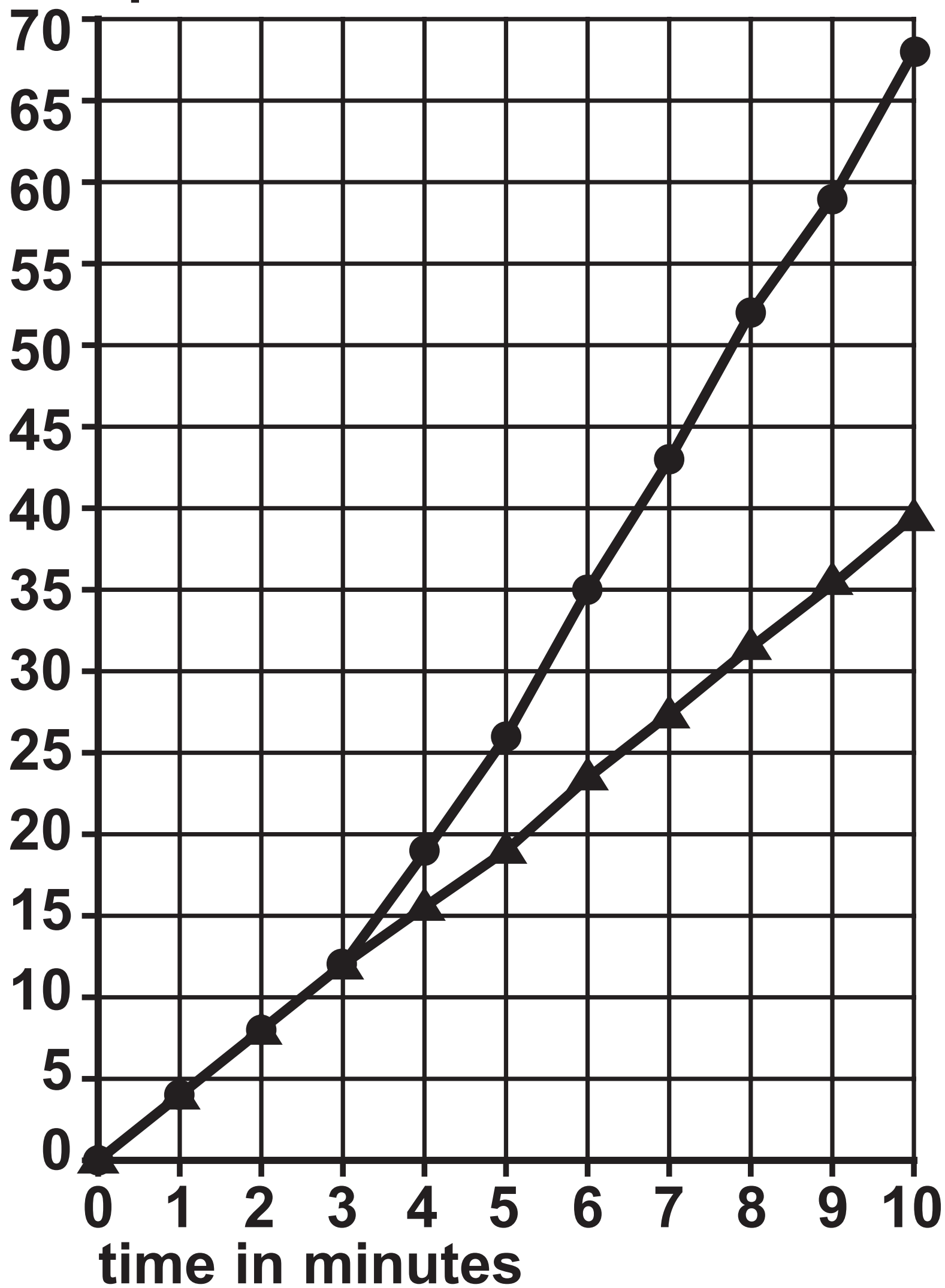
## Question 8(c)

Figure 16

—●— fan switched on after three minutes

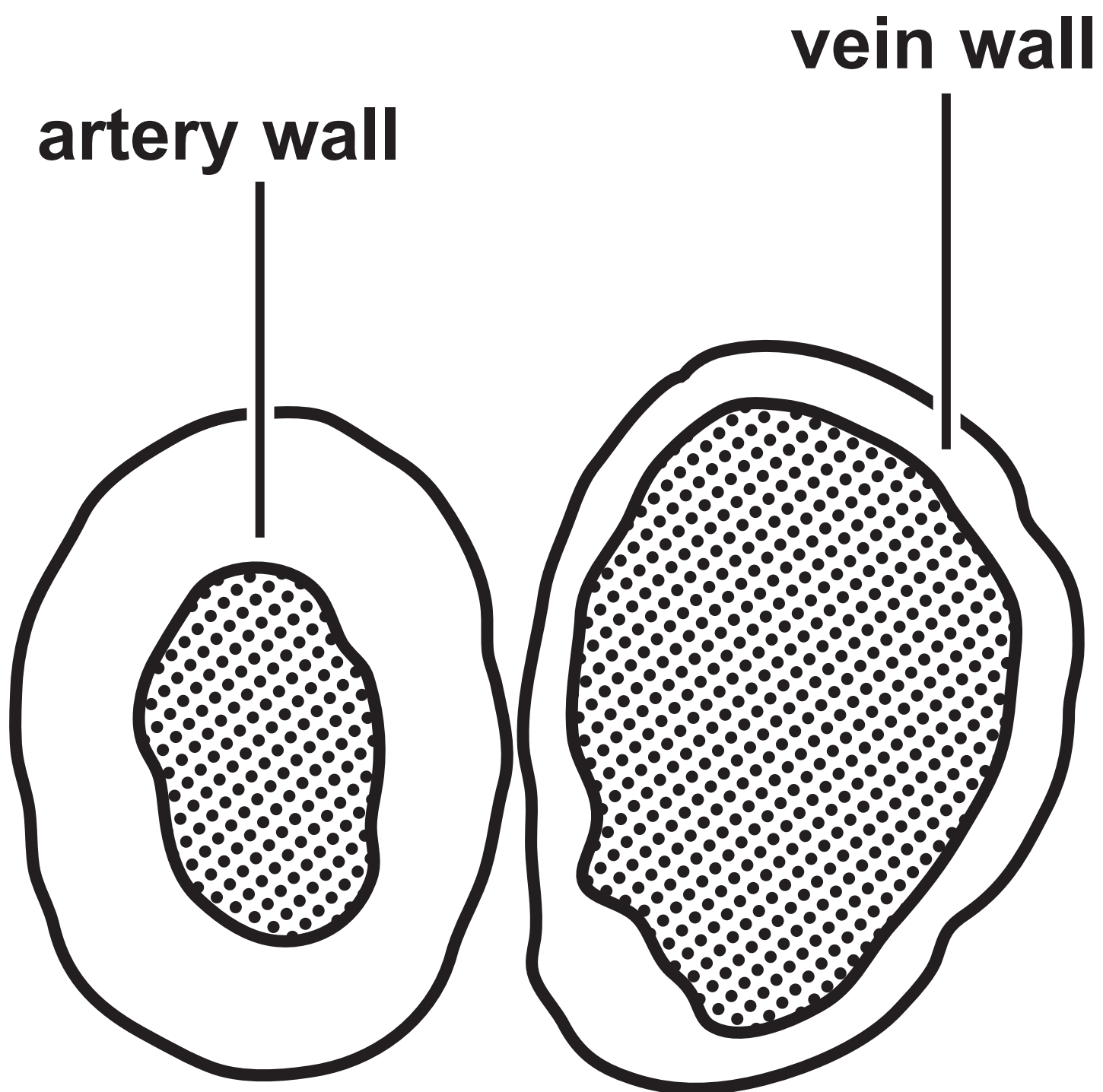
—▲— fan not switched on

volume of water taken up  
by the plant in  $\text{mm}^3$



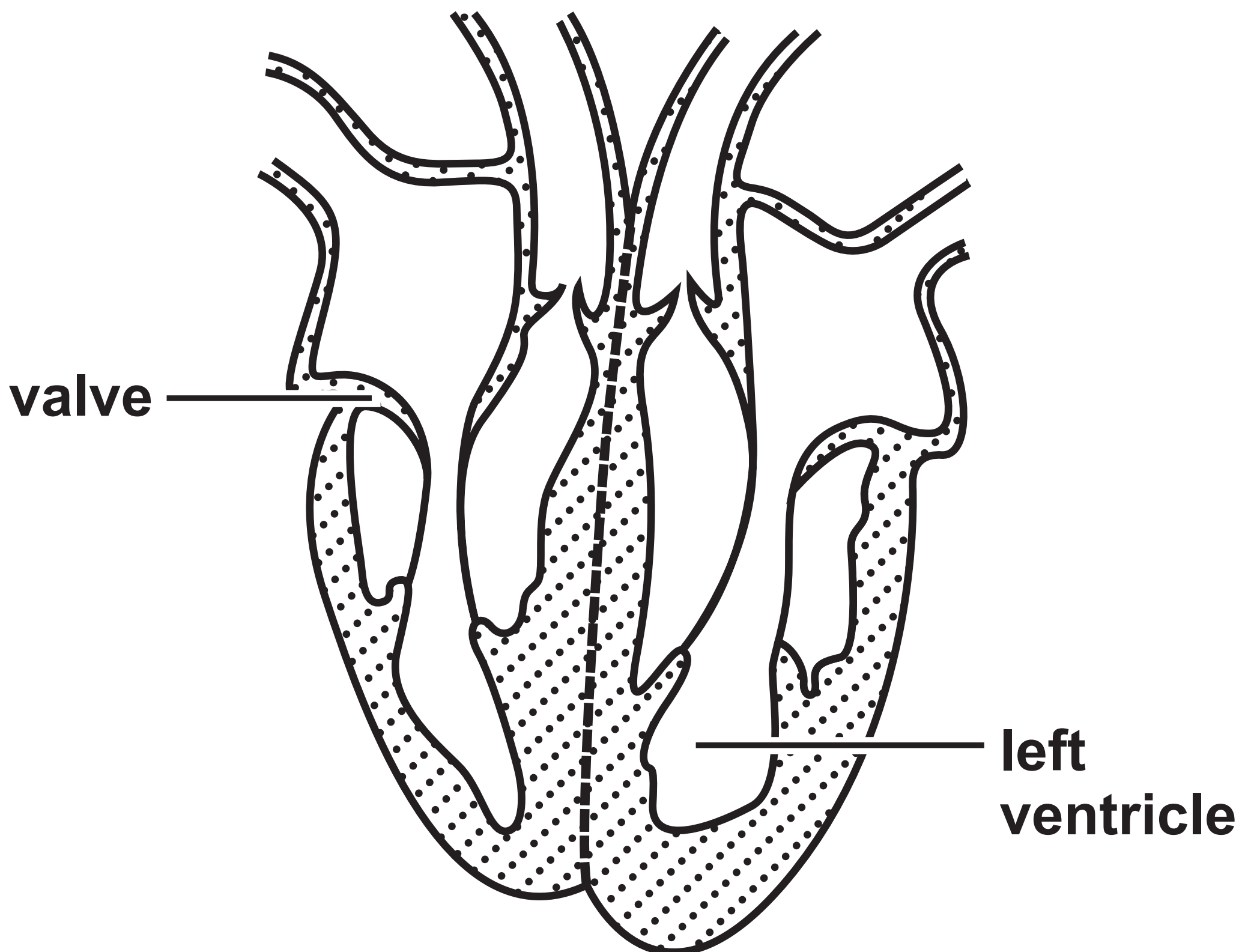
## Question 9(a)

FIGURE 17



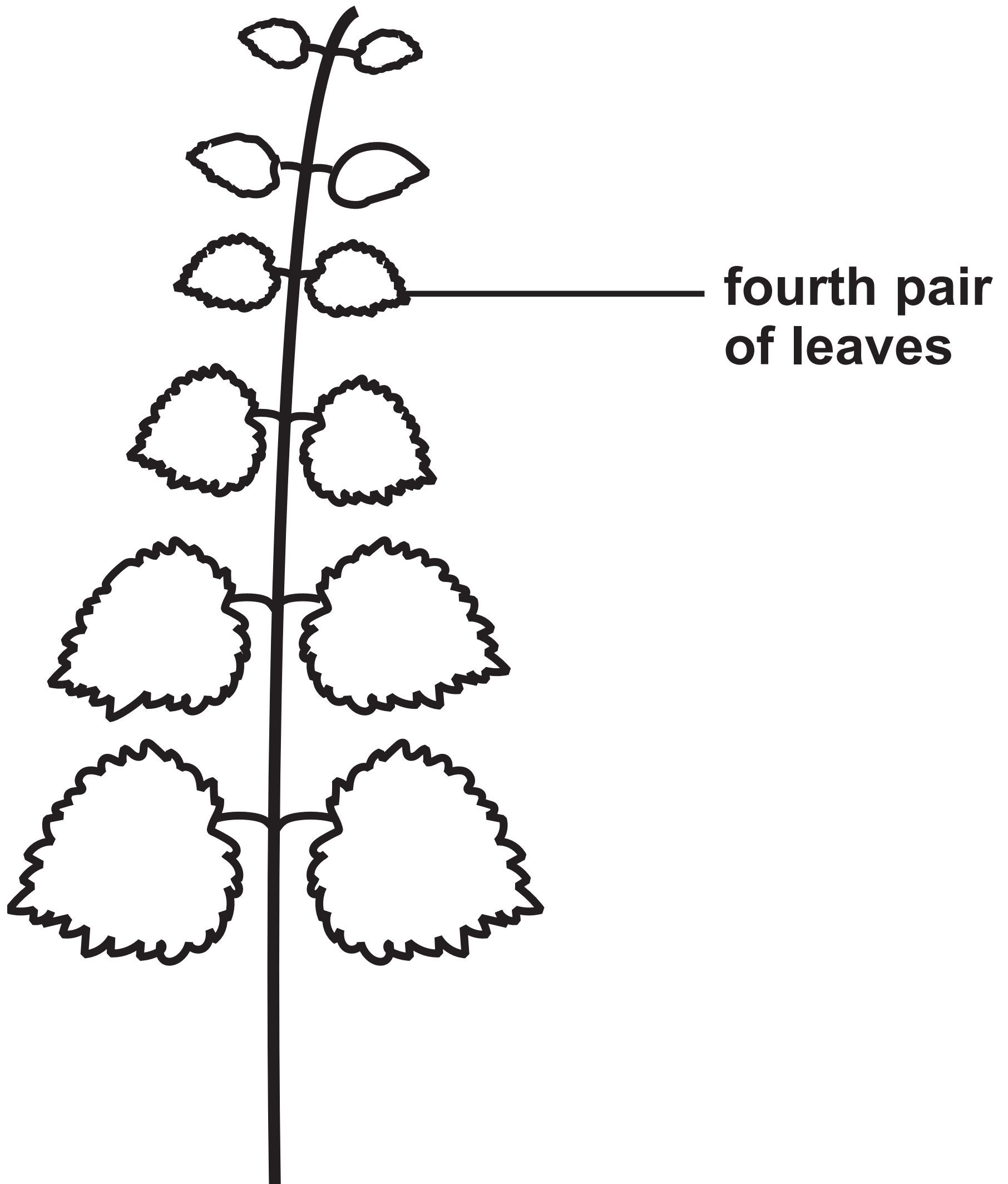
## Question 9(c)

FIGURE 18



## Question 10(a)

FIGURE 19





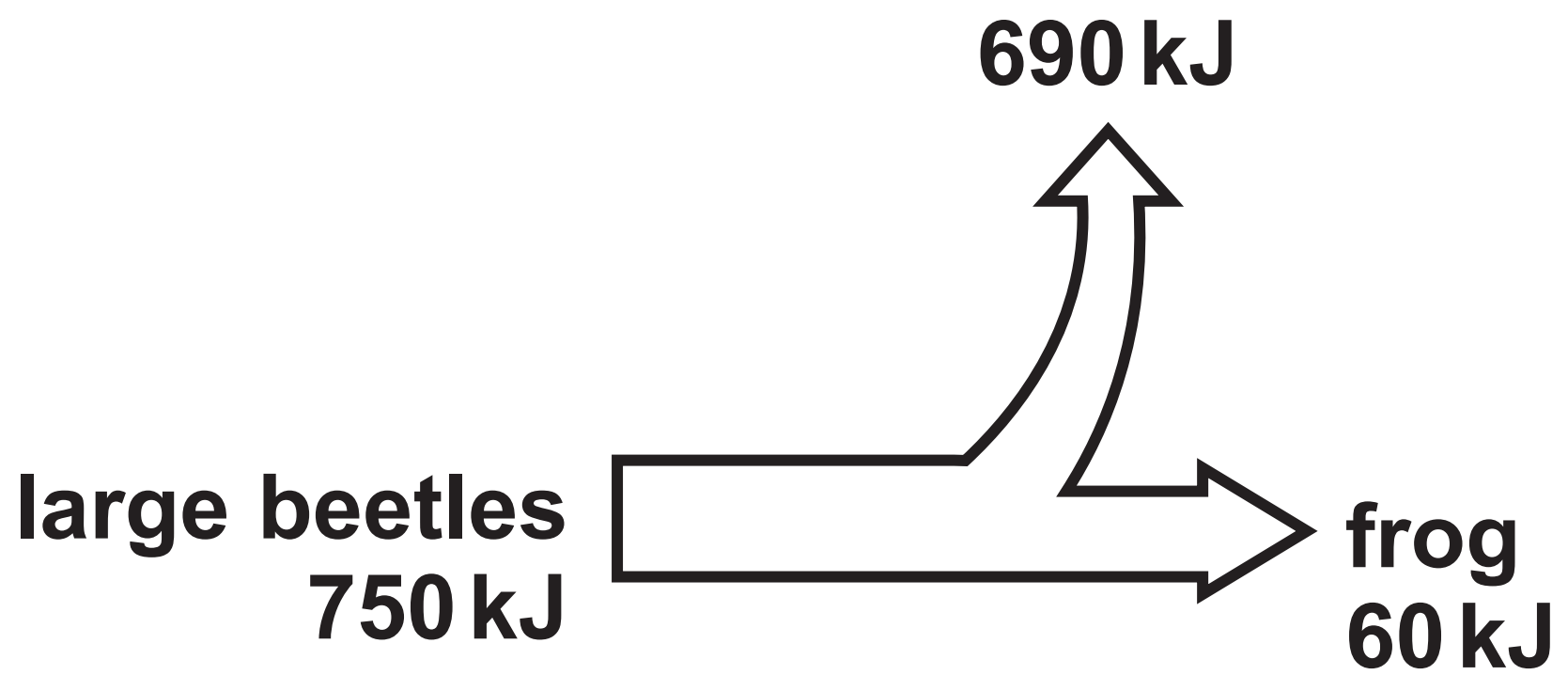
Question 10(b)

FIGURE 20

nettle plant	width of the leaf in millimetres (mm)	
	area A (in shade)	area B (in sunlight)
1	45	33
2	50	25
3	48	27
4	52	48
5	47	28
mean	48	28

## Question 10(c)(ii)

FIGURE 21



**Question 2(a)(ii)**

**(Source adapted from: © SciePro/  
Shutterstock)**

**Question 3(a)**

**(Source: © mariyaermolaeva/Shutterstock)**

**Question 4(a)**

**(Source adapted from: © Rattiya  
Thongdumhyu/Shutterstock)**

**Question 5(a)**

**(Source: © Evan Lorne/Shutterstock)**

**Question 6(a)**

**(Source: © ghrzuzudu/Shutterstock)**

**Question 9(a)**

**(Source: © The University of Kansas  
Medical Center)**

**Question 10(a)**

**(Source: © Alila Medical Media/  
Shutterstock)**